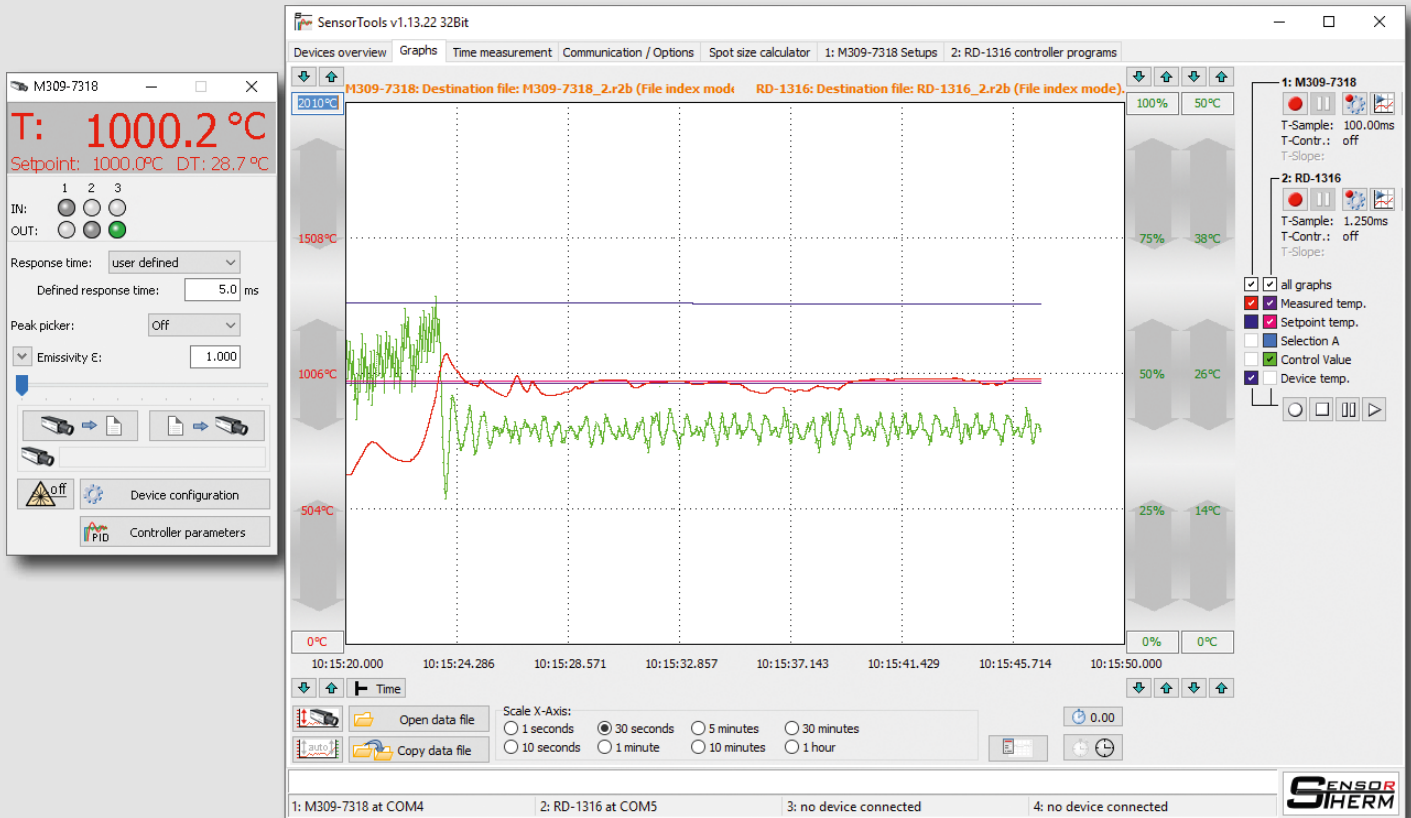


Software *SensorTools*

Adjustment, Processing and Analyzing Software



The PC software for communication with

- **Sensortherm pyrometers**
- **Sensortherm temperature controllers**
- **Sensortherm calibration sources**

Regular updates with new features

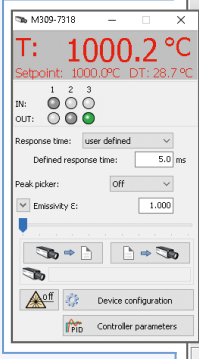
Download: www.sensortherm.de/en/downloads/#anleitungen_software

- **Measured values of up to 4 devices simultaneously, numerically and graphically**
 - **Graphical representation scalable**
 - **Setting of all device parameters**
 - **Transferring device parameters to other devices**
 - **Extremely fast measured value recording (up to 50 µs), adjustable recording rate**
 - **csv export**
- and much more...

Connect - Adjust - Display - Record - Evaluate

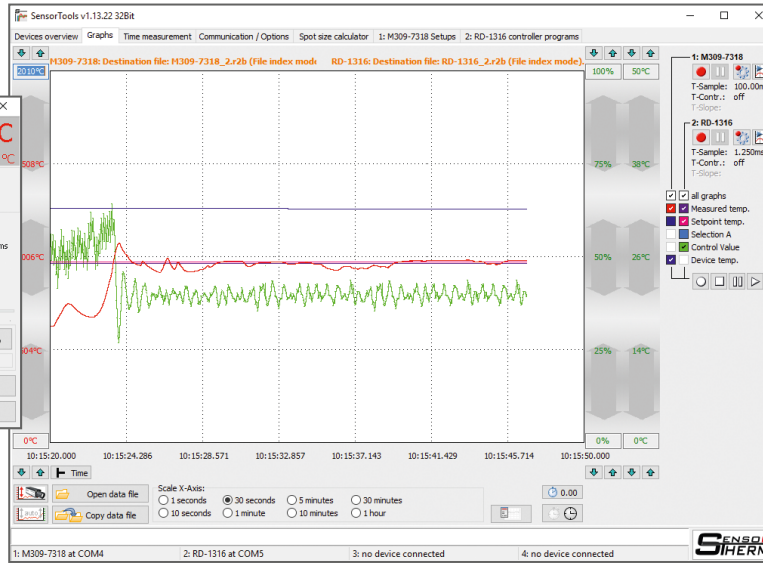
Control window

- Measured temperature and device temperature display
- Display of active, deactivated and inactive digital inputs and outputs
- Adjust measuring parameters
- Save measurement parameters quickly
- Select device configurations
- Activate laser targeting light / configure camera
- Set the motorized focus
- Define control parameters



Main window

- Connect the measuring devices (up to 4 devices simultaneously)
- Graphical representation of the temperature profile
- Device and software updates, language settings, command terminal



Sidebar

- Device model
- Recording from one device or all at the same time
- Define recording settings
- See recording data

Graphs

- Select required graphs
- Choose a color
- Y-axis: Enter the scale limits or move quickly with the mouse
- X-axis: Select display time for graph generating between 1 s for details and 8 h for long-term monitoring
- X-axis: Switch between time and time set manual to 0

Evaluation

- Instantly play back measured data, load from saved data file, view details, print
- csv export for easy measurement data transfer, e.g. In Excel

Extras

Data collection modes

- Easy mode selection for setting the measurement data transfer to the PC
- Customize the data rate

Time measurement

- Measure the time between a start and end temperature

Single-point temperature adjustment

- Compensate for optical losses in measurements through windows or lenses

Customize

- Device language, display or suppress temperature on the device, key lock, laser targeting light switch-off
- Transferring device parameters to other devices

Spot size calculator

- Calculate spot sizes outside the focused distance

System Requirements

Operating systems: Windows 7, 8, 8.1, 10 (32 or 64 Bit)

Recommended PC: i7 multi-core processor with 3 GHz and 16 GB RAM, screen resolution min. 1024x768.

(NOTE: When connected and configured with older computers with less capacity, data capturing or recording errors may occur when transmitting data)

PC Connection: Via device interface to PC interface (RS232 or RS485, USB via USB interface converter).

Sensortherm reserves the right to make changes in scope of technical progress or further developments.

Sensortherm-Datasheet_SensorTools-Software (Dec. 07, 2021)

Sensortherm GmbH

Infrared Temperature Measurement and Control
 Weißkirchener Str. 2-6 • D-61449 Steinbach/Ts.
 Tel.: +49 6171 887098-0 • Fax: -989
 www.sensortherm.com • info@sensortherm.com

